



SEPTEMBER 2018

2016 BOND & TIF PROJECT UPDATE

Grapevine-Colleyville ISD

(design plans in this document were all modified to fit budgets and do not represent current renovation work)

Huckabee



MORE THAN ARCHITECTS

Multipurpose Activity Center Updates

Timberline Elementary School Drive

Cannon Elementary School

Mustang Panther Stadium

GHS Auditorium Lighting, Sound System and Sound Room Renovation

GHS Fire Sprinkler & HVAC Controls Renovation / CHHS Fire Alarm Replacement

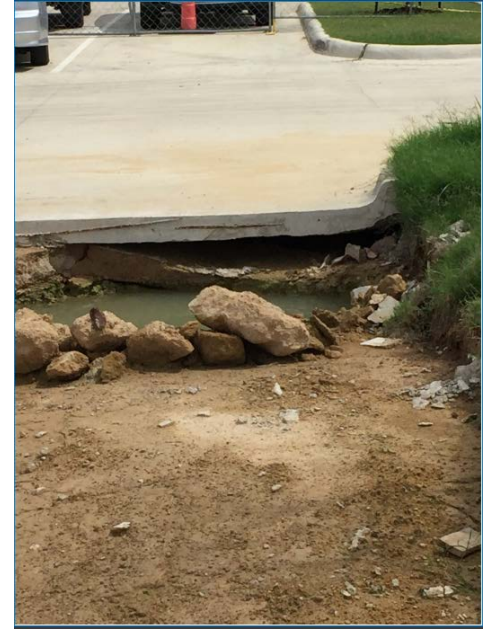
Summer 2010 Renovation Projects

MULTIPURPOSE ACTIVITY CENTERS

MULTIPURPOSE ACTIVITY CENTERS CHHS & GHS

- + Contractor is currently working on punch list items at both facilities.
- + Still awaiting delivery and installation of graphics at stairwells.

GHS - MULTIPURPOSE ACTIVITY CENTERS



+ Parking area paving and water issues investigation ongoing.

GHS - MULTIPURPOSE ACTIVITY CENTERS



+ Parking area paving and water issues investigation ongoing.

GHS - MULTIPURPOSE ACTIVITY CENTERS



+ Drive paving and curb repairs complete by tennis courts.

MORE THAN ARCHITECTS

TIMBERLINE ELEMENTARY SCHOOL

TES - DRIVE



+ New drive and plantings completed

TES - DRIVE



- + New parking lot complete. Relocation of water line by JPS to relocate the fire riser is underway
- + Civil Engineer to walk project this week

TES - PLAYGROUND



+ Playground equipment and poured in place surfacing is installed.

MORE THAN ARCHITECTS

CANNON ELEMENTARY SCHOOL

CANNON ELEMENTARY SCHOOL



+ Loading dock at kitchen, sidewalk to temporary entry and curb cut on Drexel is complete.

MORE THAN ARCHITECTS

CANNON ELEMENTARY SCHOOL



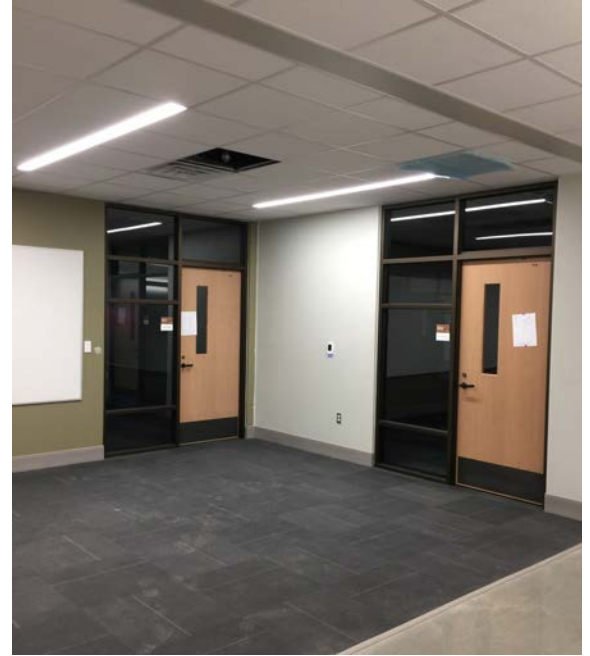
+ Typical classroom showing backpack hooks, teaching wall and entry/view to collaboration area

CANNON ELEMENTARY SCHOOL



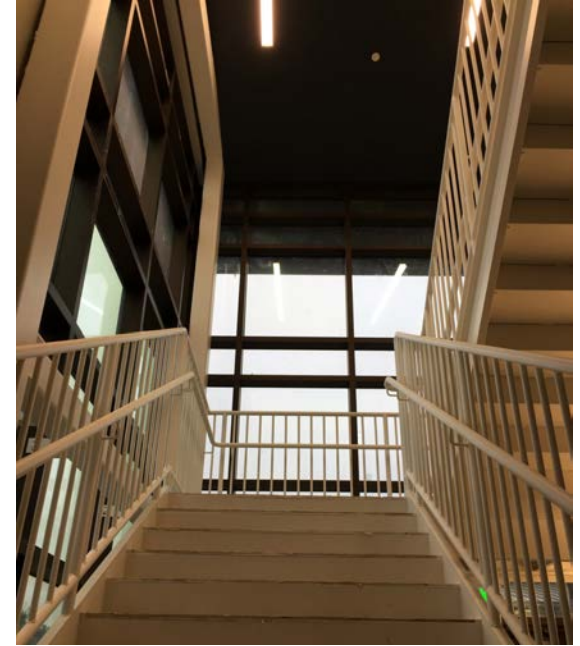
+ Typical large collaboration space outside every grade house

CANNON ELEMENTARY SCHOOL



+ Typical small collaboration space shared between grade houses

CANNON ELEMENTARY SCHOOL



+ Typical stairwells at every grade house for exiting out of the building.

MORE THAN ARCHITECTS

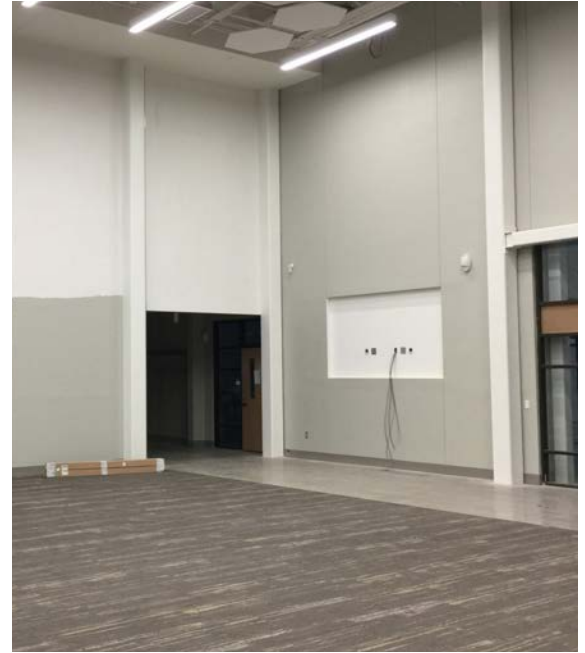
CANNON ELEMENTARY SCHOOL



+ View of learning commons facing front entry, green room and the learning stairs

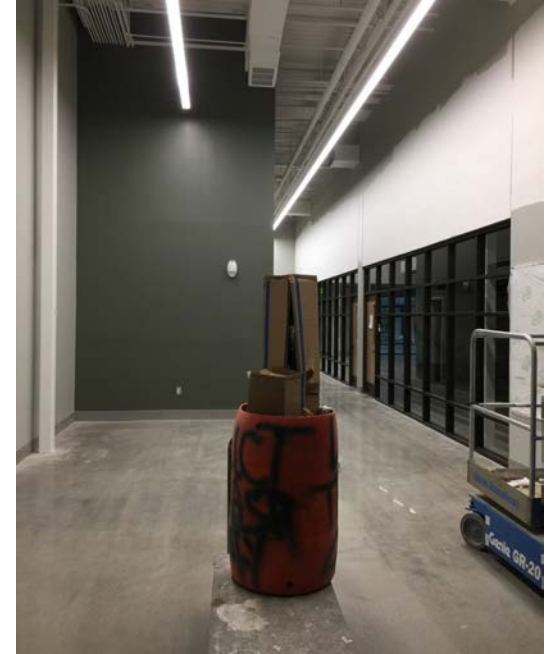
MORE THAN ARCHITECTS

CANNON ELEMENTARY SCHOOL



+ View of learning commons facing individual reading areas and small collaboration room.

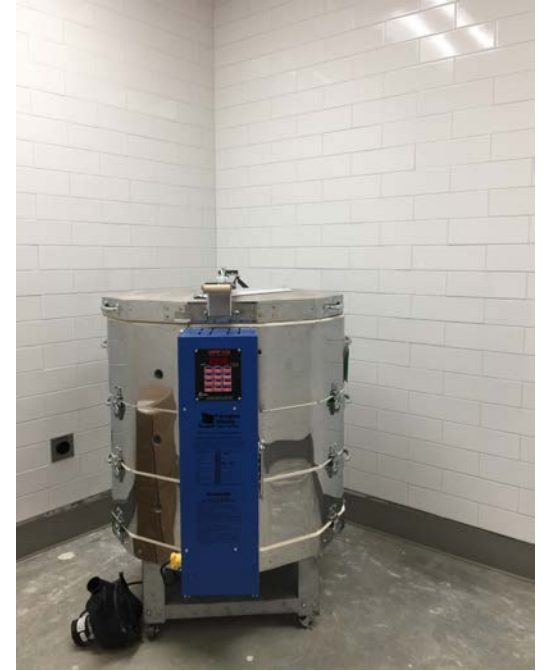
CANNON ELEMENTARY SCHOOL



+ Robotics and the Arena Area

MORE THAN ARCHITECTS

CANNON ELEMENTARY SCHOOL



+ Art classroom with natural light and kiln room

MORE THAN ARCHITECTS

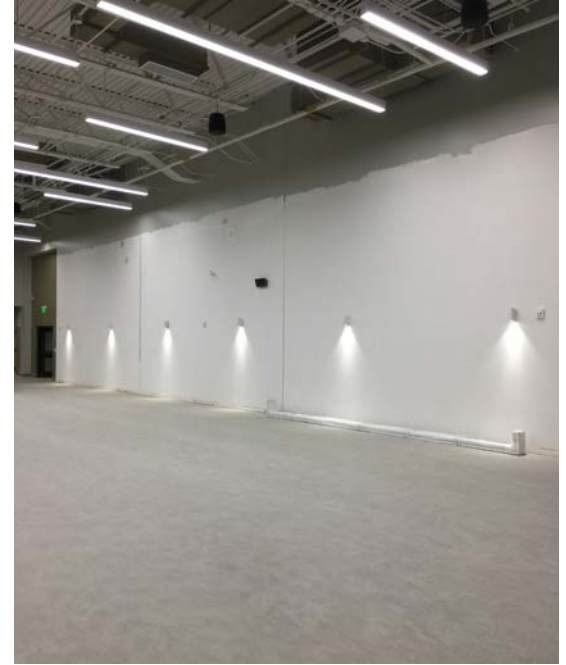
CANNON ELEMENTARY SCHOOL



+ Music room with natural light and storage

MORE THAN ARCHITECTS

CANNON ELEMENTARY SCHOOL



+ View of cafeteria showing the serving line, stage proscenium and booth dining seating area

MORE THAN ARCHITECTS

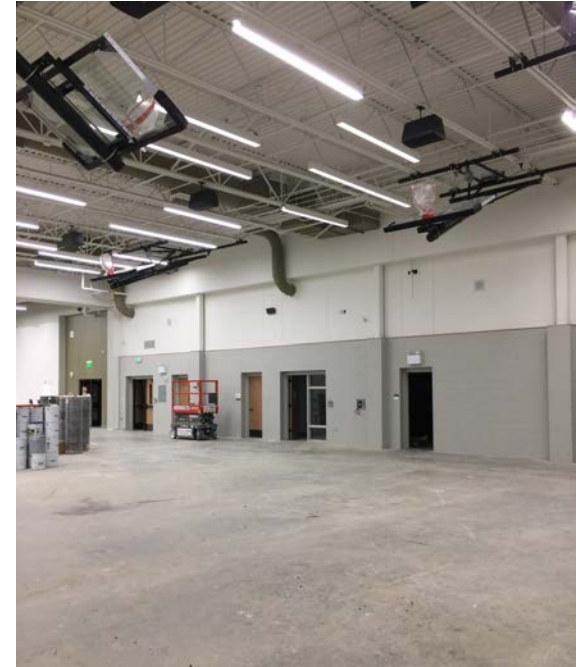
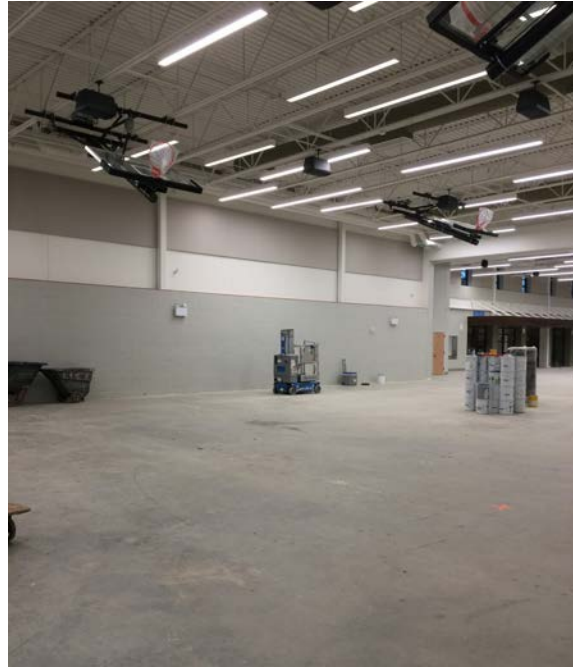
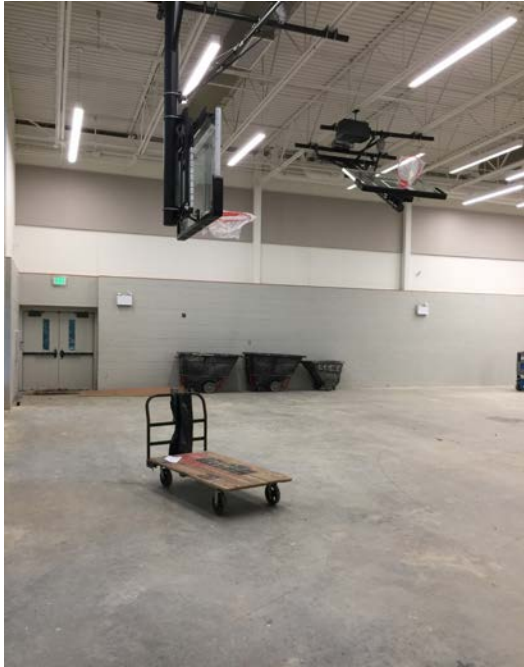
CANNON ELEMENTARY SCHOOL



- + View of kitchen serving line ready for installation and prep area, freezer/cooler and hoods installed

MORE THAN ARCHITECTS

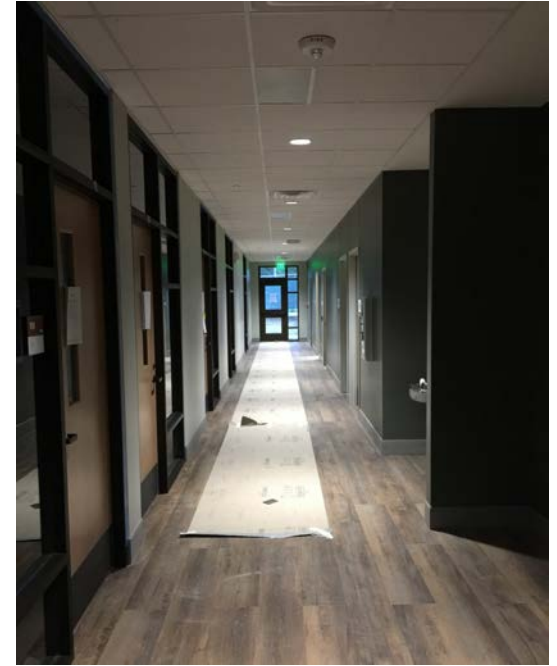
CANNON ELEMENTARY SCHOOL



+ View of gymnasium with installed equipment and ready for flooring installation.

MORE THAN ARCHITECTS

CANNON ELEMENTARY SCHOOL

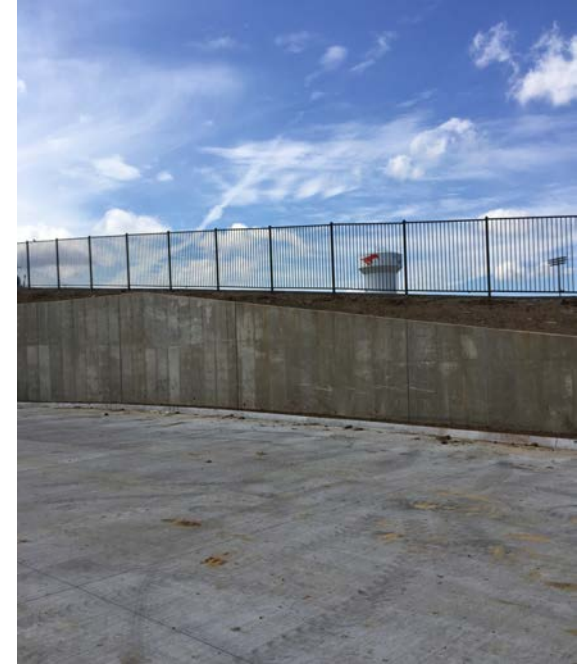


+ Administration area with view of reception, break-room and office corridor

MORE THAN ARCHITECTS

MUSTANG PANTHER STADIUM

MUSTANG PANTHER STADIUM



- + Visitor side drive is nearing completion. Stairs to mechanical pad are poured. Fence installation has begun.

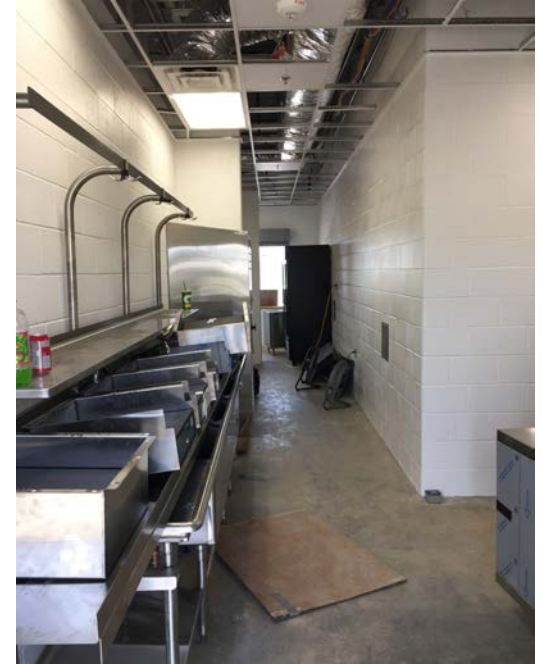
MUSTANG PANTHER STADIUM



+ Scoreboard structure and display installation complete. Overall view of field side of Press Box.

MORE THAN ARCHITECTS

MUSTANG PANTHER STADIUM



- + North Concession with completed exterior canopy and installation of kitchen equipment is ongoing.

MORE THAN ARCHITECTS

MUSTANG PANTHER STADIUM



- + South Concession with approach drive started and stainless steel serving counter on site ready for installation.

MUSTANG PANTHER STADIUM



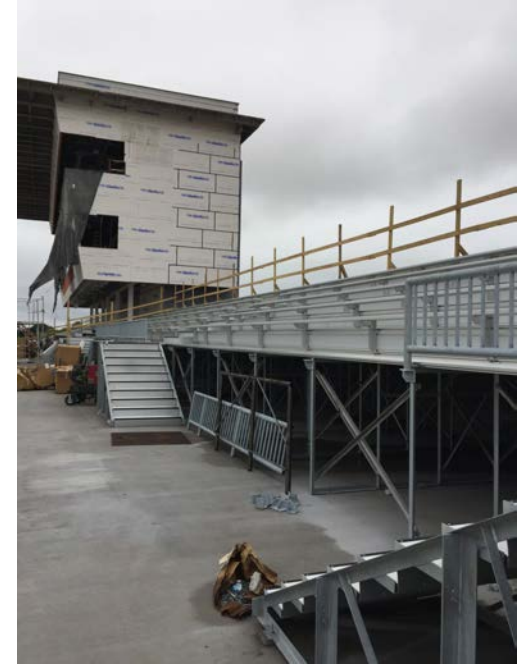
- + Press Box sheathing complete and weather barrier installation is underway. Glass at stairwells is installed. Side colonnades are being installed. Front Ticket Booths are underway.

MUSTANG PANTHER STADIUM



- + Grading for the sidewalk to the new mid-level concourse on north and south ends of the stadium as well as the front approach continues

MUSTANG PANTHER STADIUM



+ Bleacher installation is ongoing

MORE THAN ARCHITECTS

MUSTANG PANTHER STADIUM



- + Framing for Press Box storefront facing field is underway. Framing for interior walls at Press Box is underway.

GHS AUDITORIUM LIGHTING, SOUND AND
SOUND ROOM RENOVATION

GHS LIGHTING, SOUND SYSTEM & SOUND BOOTH RENOVATION

- + Norcostco installation delayed due to supplier issues. Installation to begin this week or next.
- + Sound Room renovation scope of work brought to Board tonight for approval.
- + Commencement of scope of work will be coordinated with Theatre teacher so that disruption to the program is at a minimum.

GHS FIRE SPRINKLER & HVAC CONTROLS
RENOVATION / CHHS FIRE ALARM
REPLACEMENT

GHS FIRE SPRINKLER & HVAC CONTROLS RENOVATION

- + GMP finalized for GHS and brought to Board Meeting tonight for approval.
- + Work to commence in November.

SUMMER 2019 RENOVATION PROJECTS

SUMMER 2019 RENOVATION PROJECTS

+ Eight campuses to receive various renovations in the Summer of 2019:

- Grapevine High School
- Colleyville Middle School
- Cross Timber Middle School
- Dove Elementary School
- Glennhope Elementary School
- Grapevine Elementary School
- O.C. Taylor Elementary School
- Silverlake Elementary School

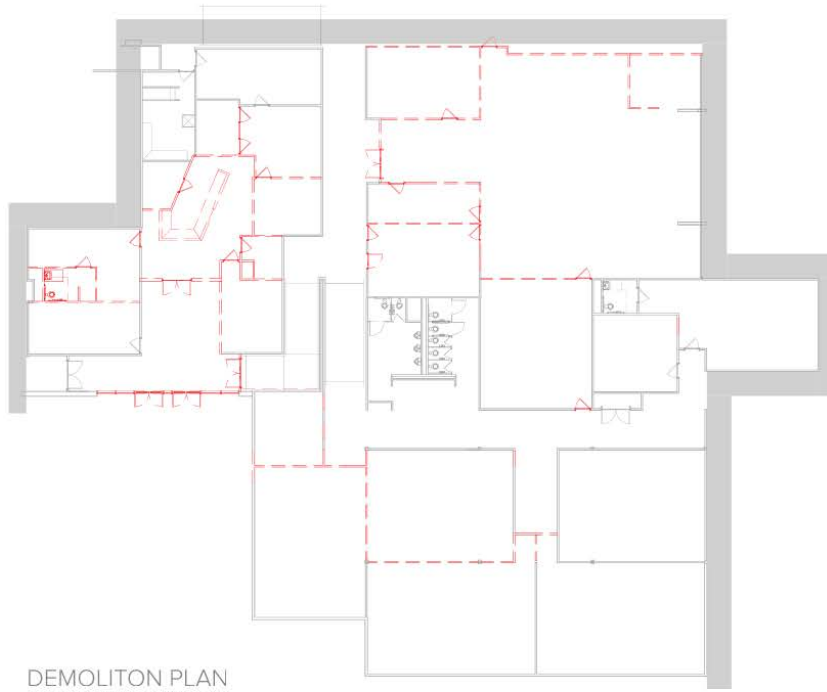
SUMMER 2019 RENOVATION PROJECTS

+ Current schedule:

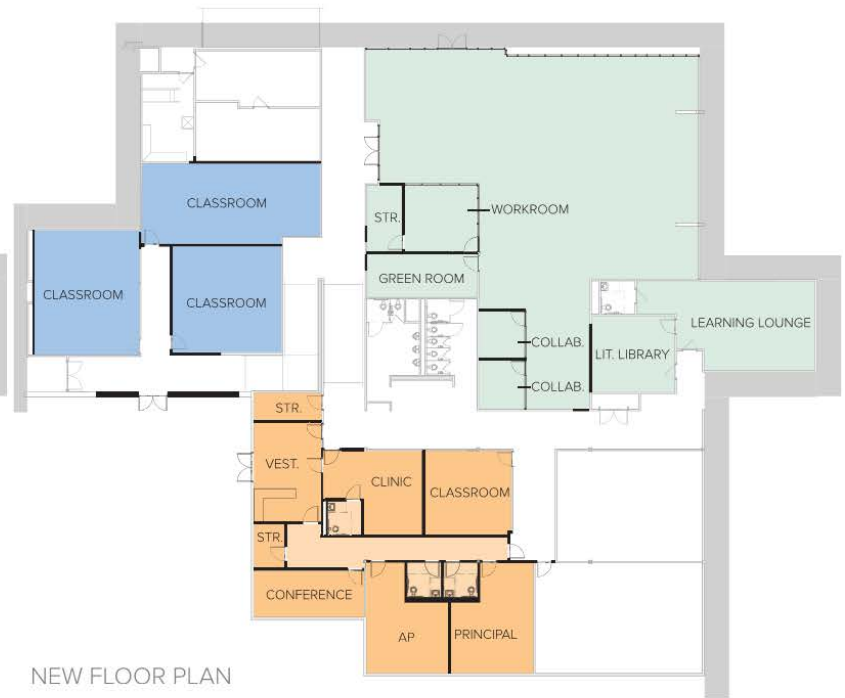
- 11/02: Design Development Complete
- 01/29, 02/05, 02/12: Bid Days for Various Packages of Work
- 03/25: GMPs Presented to Board for approval



FLOOR PLAN - DOVE ELEMENTARY SCHOOL
 NOT TO SCALE



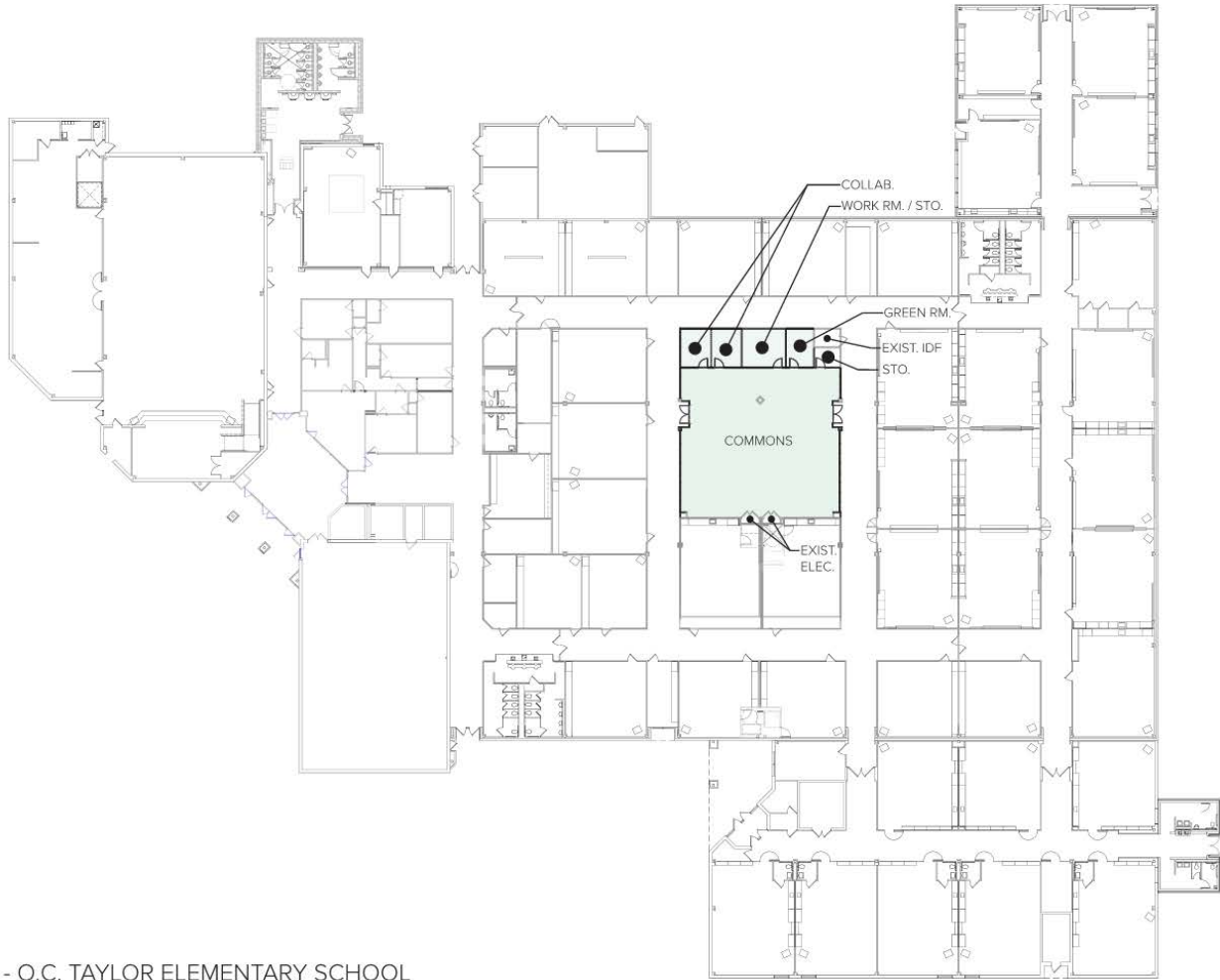
DEMOLITION PLAN
*RED LINES INDICATE DEMO



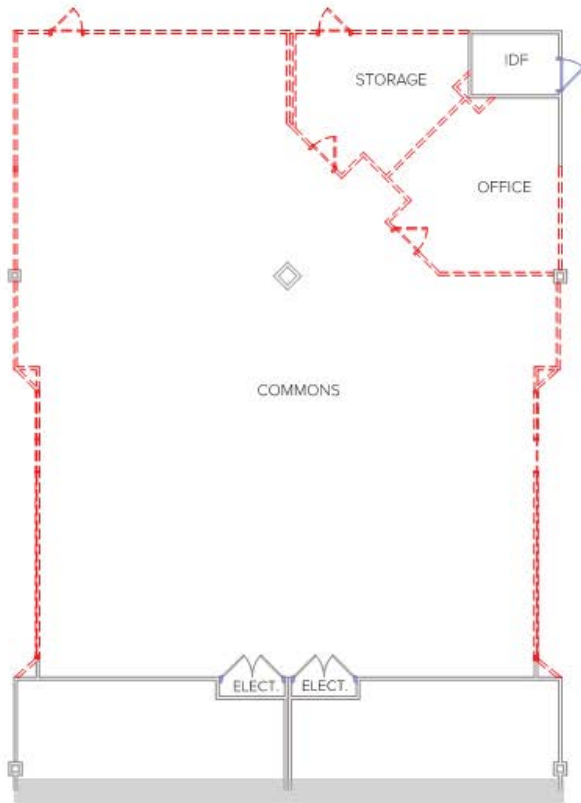
NEW FLOOR PLAN

CONTROLLED VESTIBULE AND COMMONS - DOVE ELEMENTARY SCHOOL
NOT TO SCALE

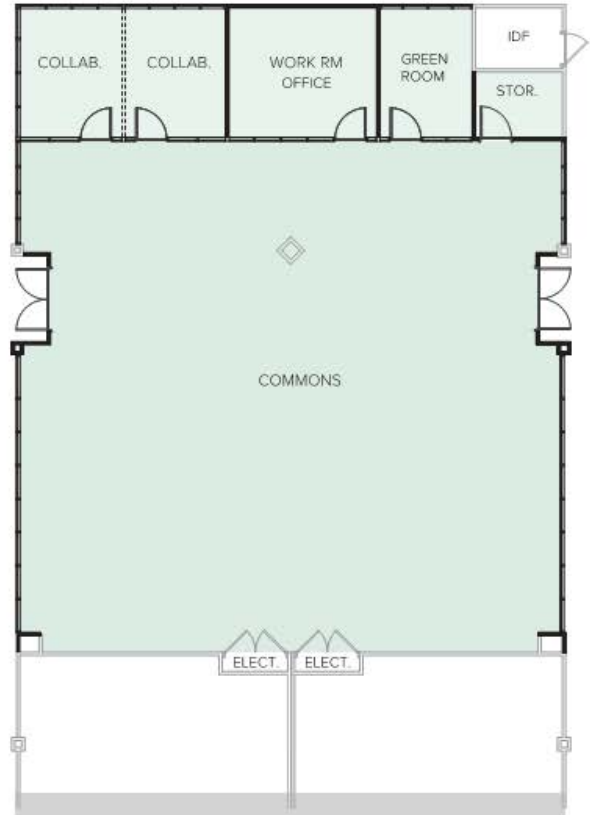
- NEW PARTITION ———
- EXISTING PARTITION ———
- NEW GLAZING ———



FLOOR PLAN - O.C. TAYLOR ELEMENTARY SCHOOL
NOT TO SCALE

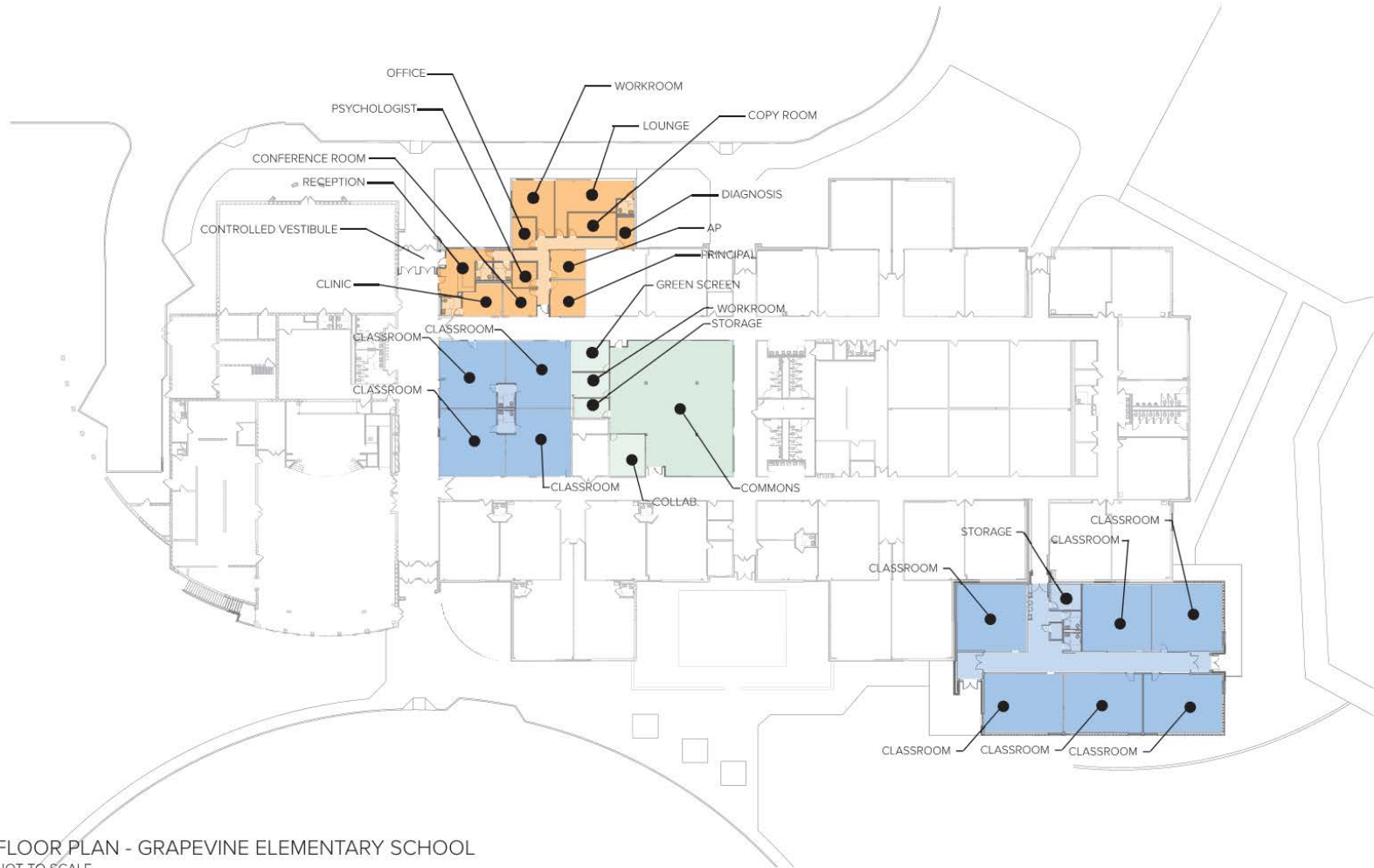


DEMOLITION PLAN

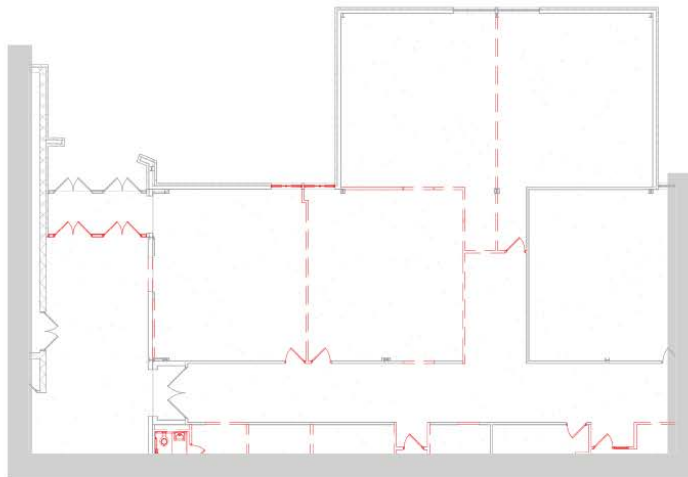


NEW FLOOR PLAN

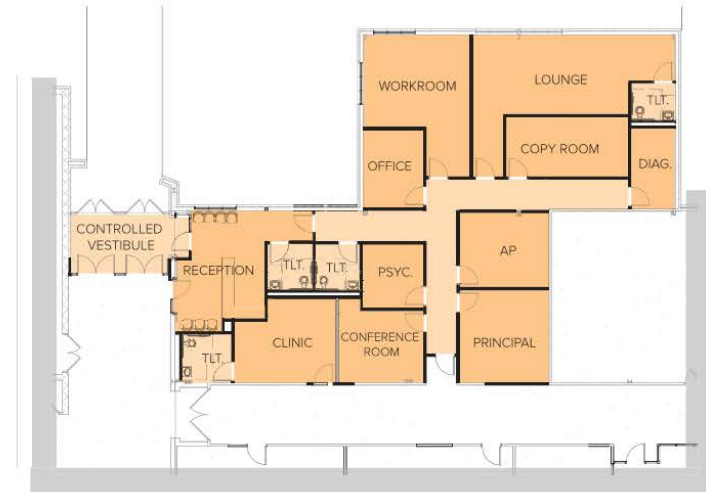
- EXIST. PARTITION WALL
- NEW PARTITION WALL
- NEW STOREFRONT
- MOVABLE WALL



FLOOR PLAN - GRAPEVINE ELEMENTARY SCHOOL
 NOT TO SCALE

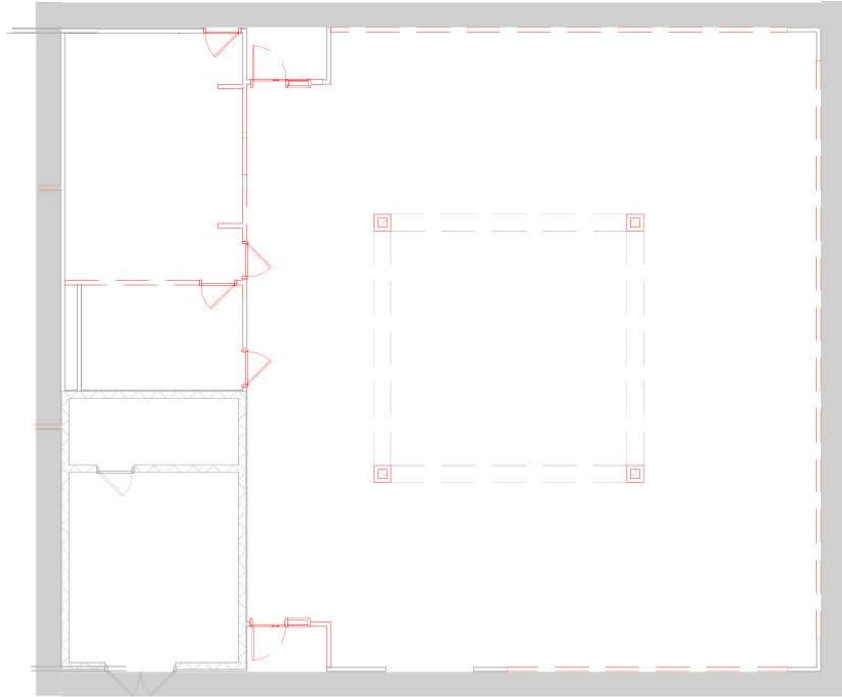


DEMOLITION PLAN
 *RED LINES INDICATE DEMO

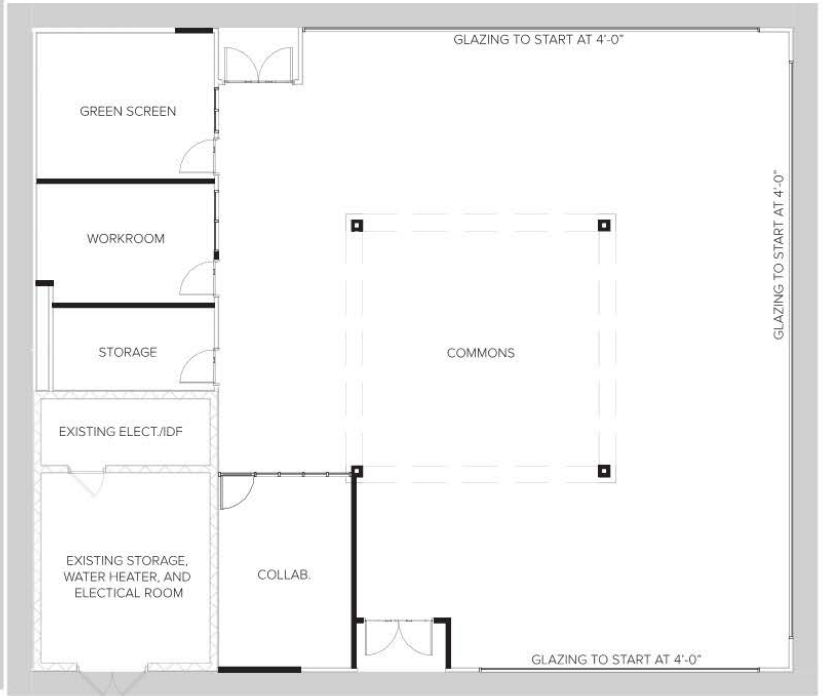


NEW FLOOR PLAN

- NEW PARTITION ———
- EXISTING PARTITION ———
- NEW GLAZING ———

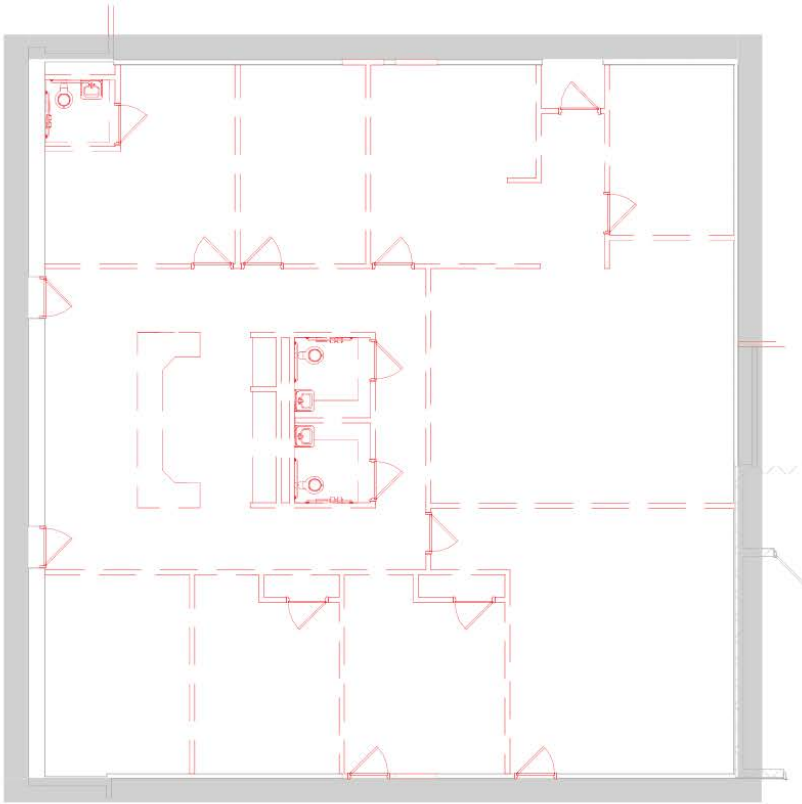


DEMOLITION PLAN
 *RED LINES INDICATE DEMO



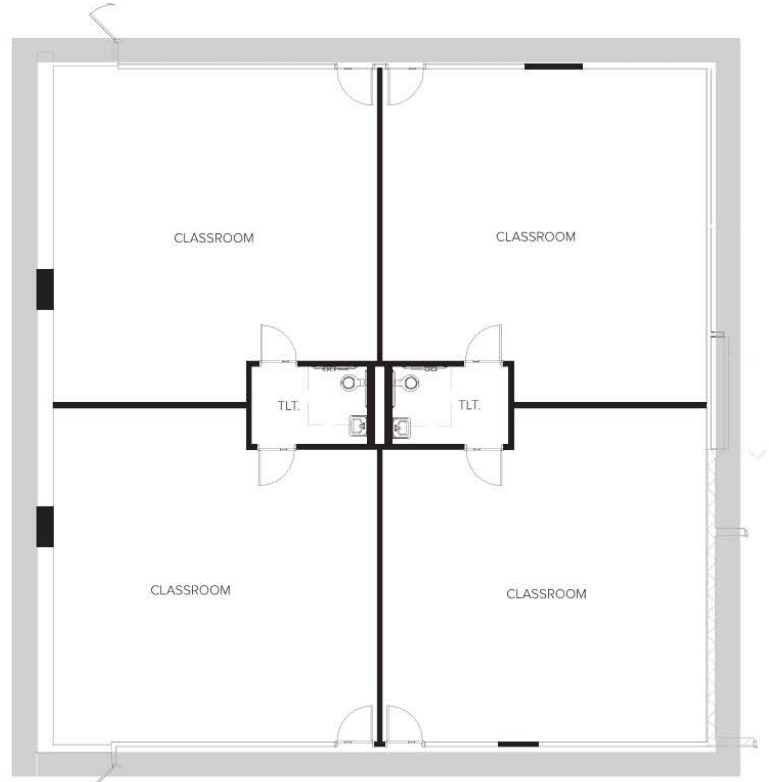
NEW FLOOR PLAN

- NEW PARTITION
- EXISTING PARTITION
- NEW GLAZING



DEMOLITION PLAN

*RED LINES INDICATE DEMO



NEW FLOOR PLAN

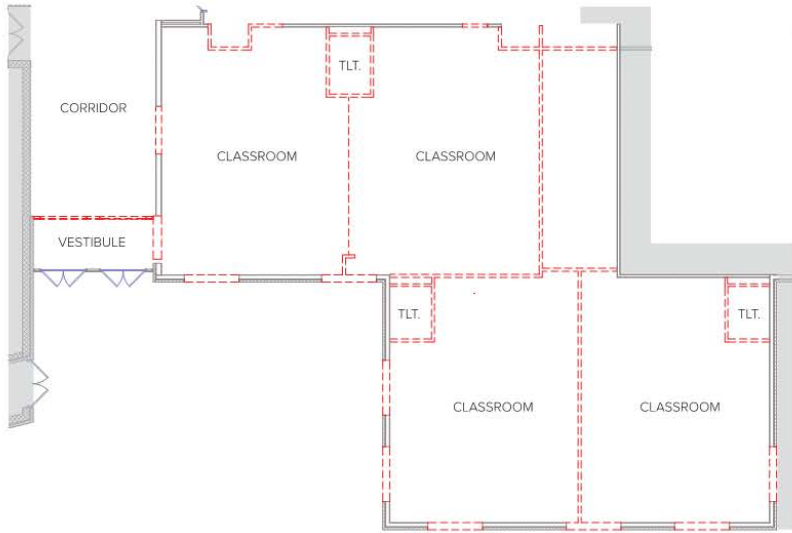
ADMINISTRATION AND CLASSROOMS- GRAPEVINE ELEMENTARY SCHOOL
NOT TO SCALE

- NEW PARTITION ———
- EXISTING PARTITION ———
- NEW GLAZING ———



CLASSROOM ADDITION- GRAPEVINE ELEMENTARY SCHOOL
 NOT TO SCALE

- NEW PARTITION
- EXISTING PARTITION
- NEW GLAZING

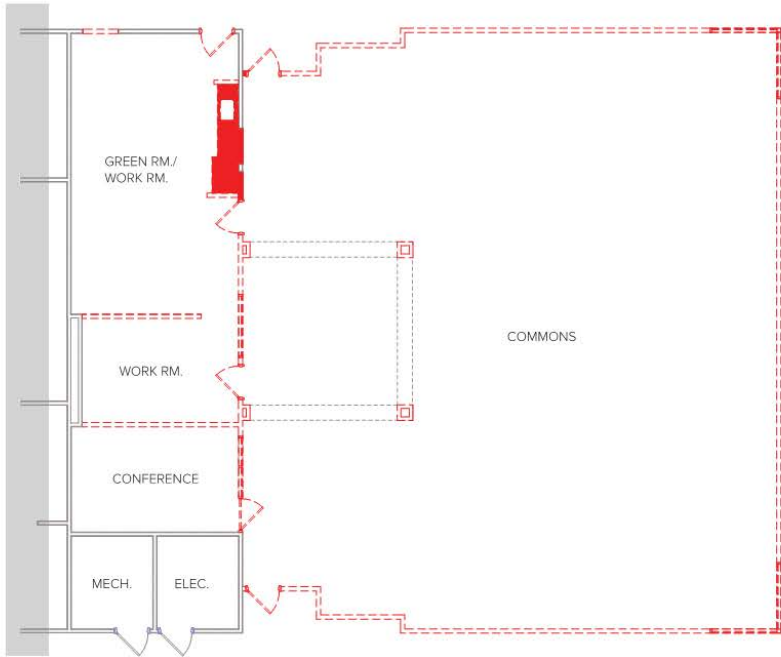


DEMOLITION PLAN
 *RED LINES INDICATE DEMO

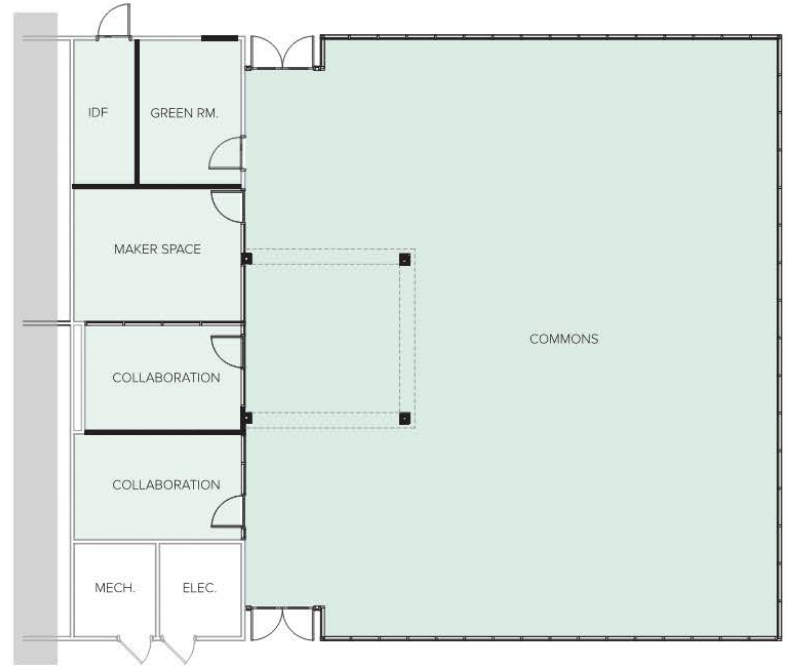


NEW FLOOR PLAN

-  EXIST. PARTITION WALL
-  NEW PARTITION WALL
-  NEW STOREFRONT

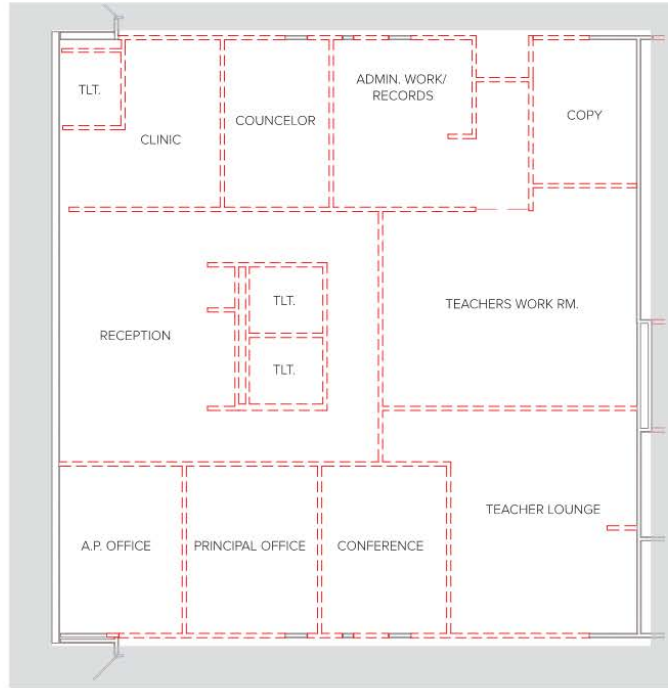


DEMOLITION PLAN
 *RED LINES INDICATE DEMO

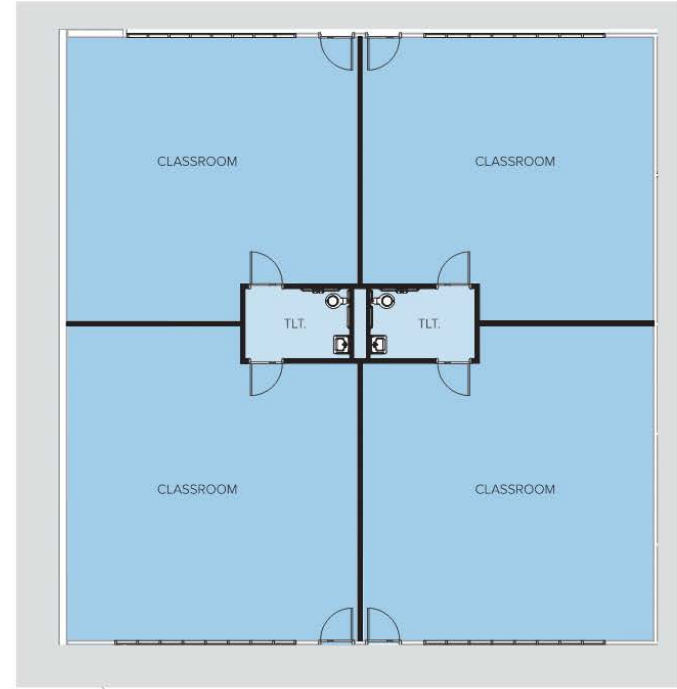


NEW FLOOR PLAN

- EXIST. PARTITION WALL
- NEW PARTITION WALL
- NEW STOREFRONT



DEMOLITION PLAN
 *RED LINES INDICATE DEMO



NEW FLOOR PLAN

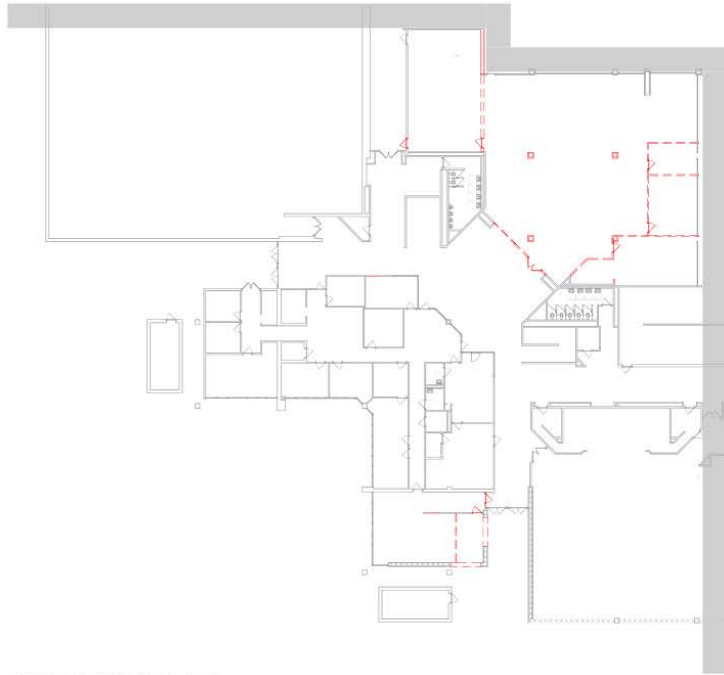
-  EXIST. PARTITION WALL
-  NEW PARTITION WALL
-  NEW STOREFRONT



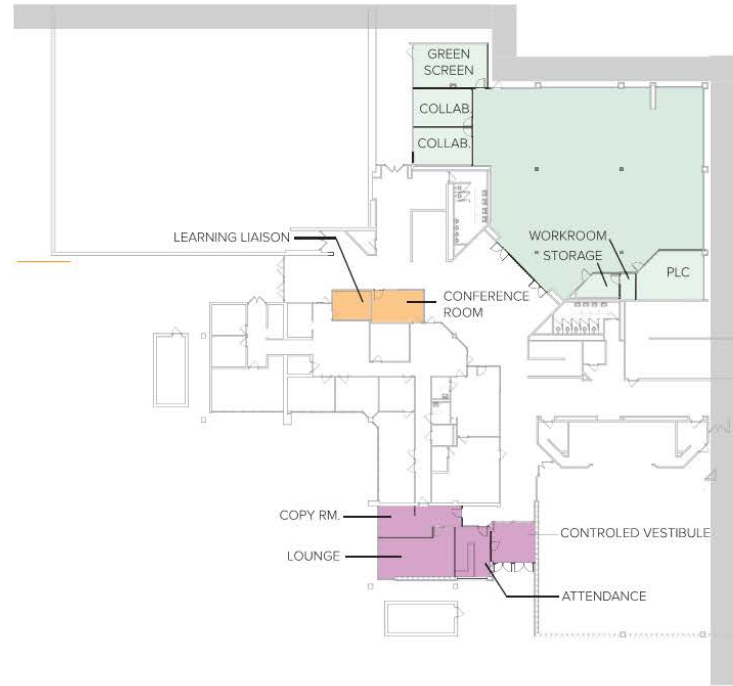
FLOOR PLAN - COLLEYVILLE MIDDLE SCHOOL
 NOT TO SCALE

DESIGN OPTION #1

DESIGN OPTION #2



DEMOLITION PLAN
 *RED LINES INDICATE DEMO

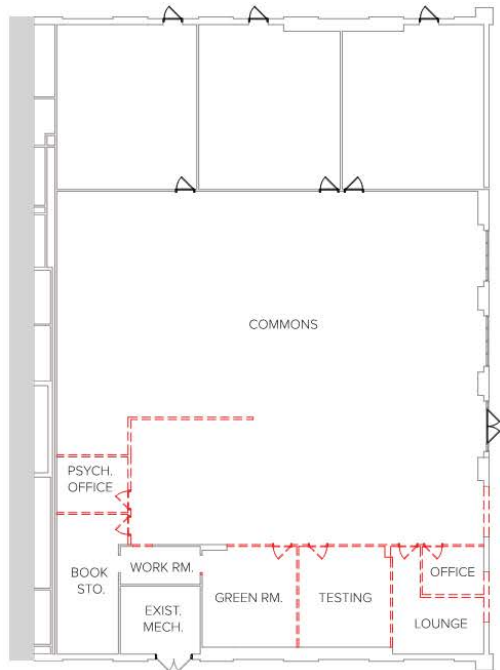


NEW FLOOR PLAN

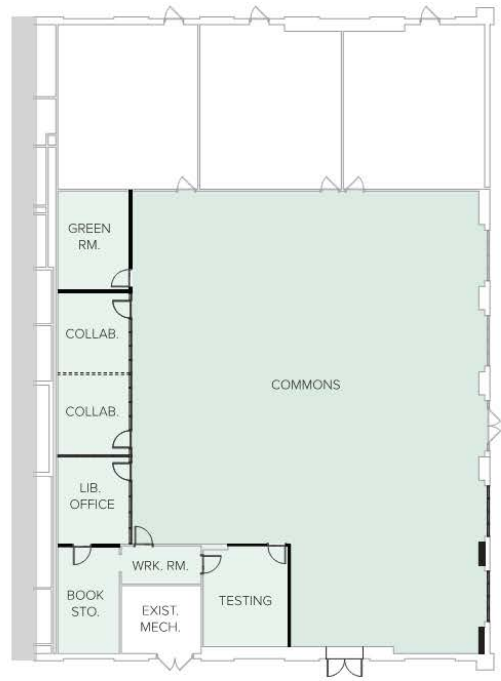
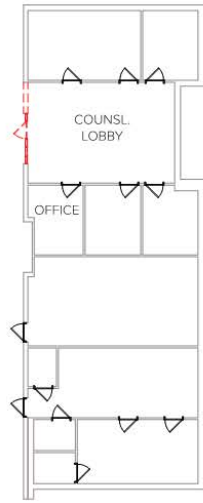
- NEW PARTITION ———
- EXISTING PARTITION ———
- NEW GLAZING ———



FLOOR PLAN - CROSS TIMBERS MIDDLE SCHOOL
NOT TO SCALE



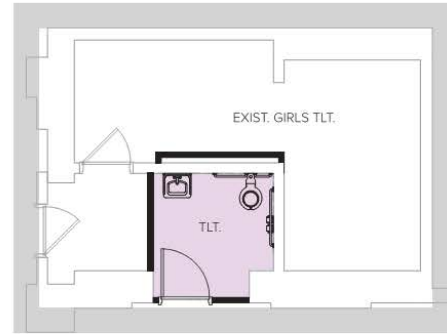
DEMOLITION PLAN
 *RED LINES INDICATE DEMO



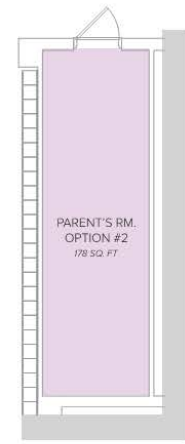
NEW FLOOR PLAN



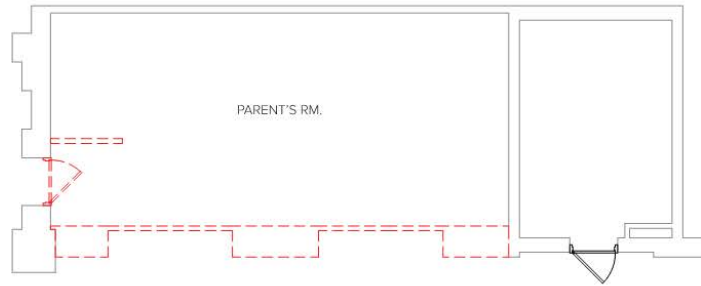
- EXIST. PARTITION WALL
- NEW PARTITION WALL
- NEW STOREFRONT



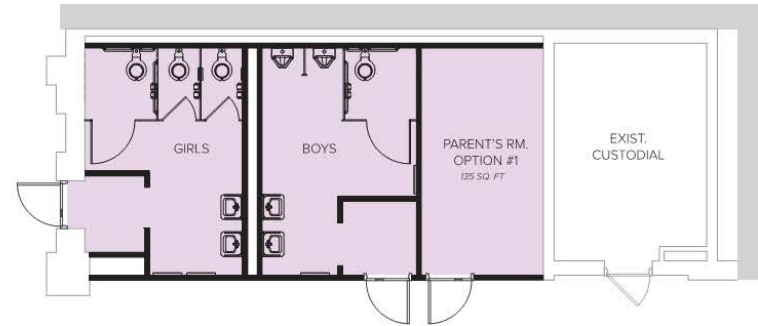
NEW FLOOR PLAN - UNISEX FACULTY TLT.



NEW FLOOR PLAN

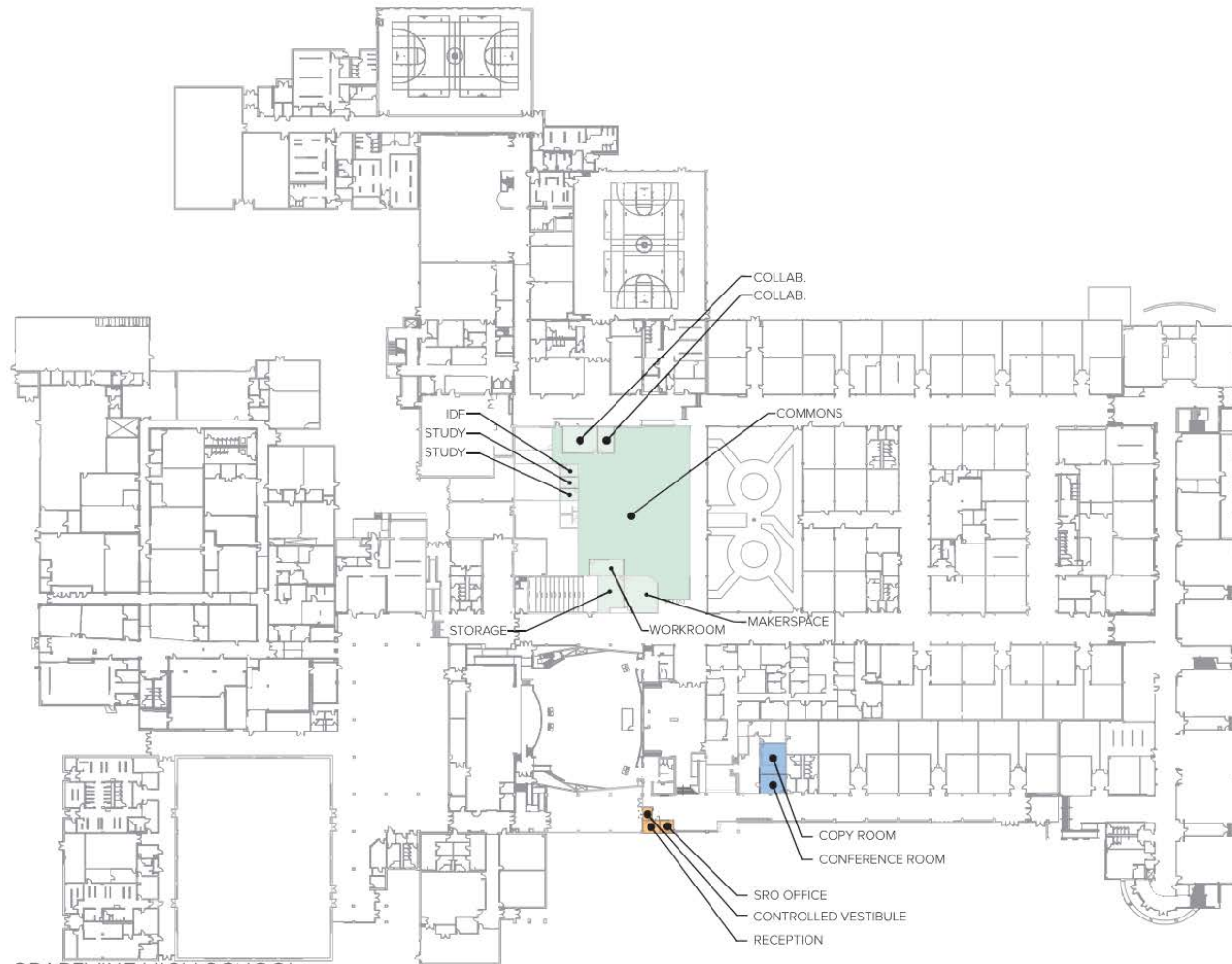


DEMOLITON PLAN
*RED LINES INDICATE DEMO



NEW FLOOR PLAN

-  EXIST. PARTITION WALL
-  NEW PARTITION WALL
-  NEW STOREFRONT



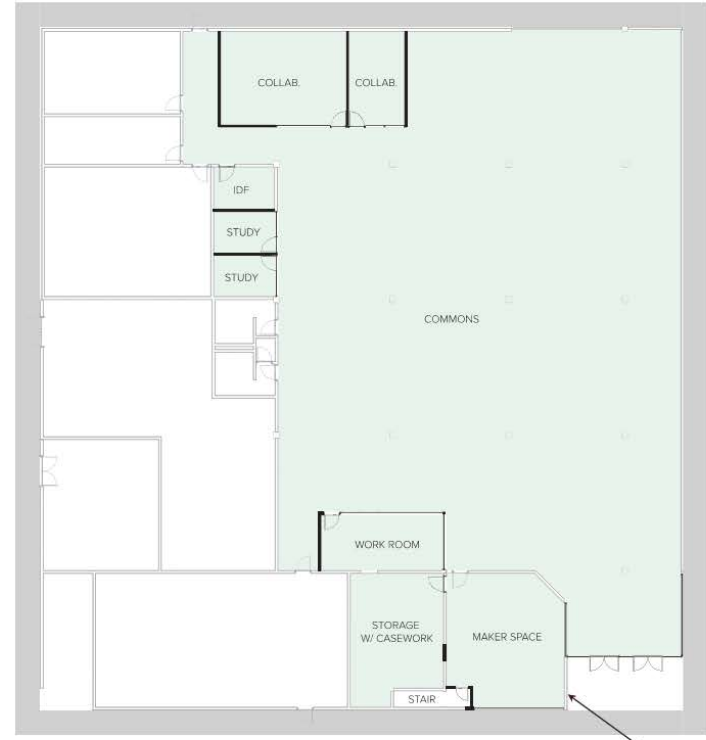
FLOOR PLAN - GRAPEVINE HIGH SCHOOL
NOT TO SCALE



DEMOLITION PLAN

*RED LINES INDICATE DEMO

COMMONS AREA - GRAPEVINE HIGH SCHOOL
NOT TO SCALE



NEW FLOOR PLAN

- NEW PARTITION 
- EXISTING PARTITION 
- NEW GLAZING 



DEMOLITION PLAN
 *RED LINES INDICATE DEMO



NEW FLOOR PLAN

- NEW PARTITION ———
- EXISTING PARTITION ———
- NEW GLAZING ———

QUESTIONS?